

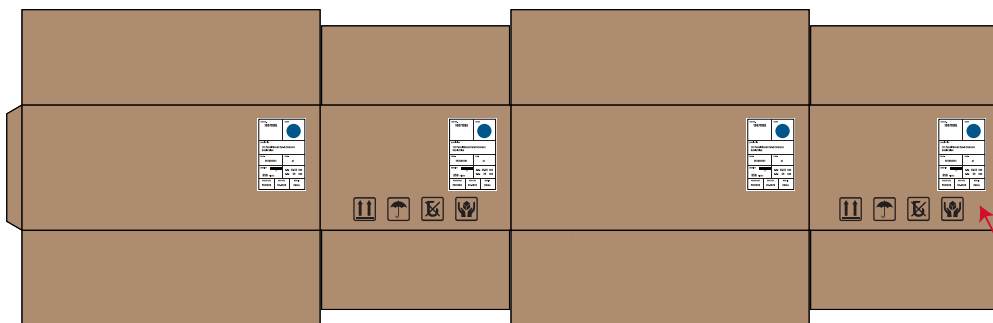
NOTE: ALL MATERIAL COMPLIANT ROHS STANDARD

PE BAG SIZE(INCH)	PART NO.	length/FT	CARION SIZE(CM)	Q'TY	G.W(KG)
6.89*7.48	100250	0.5	50*32*21	550	7.6
6.89*7.48	100251	1	50*32*21	500	8.5
6.89*7.48	100252	1.5	50*32*21	400	8.0
6.89*7.48	100253	2	50*32*21	350	7.7
6.89*7.48	100254	3	50*32*21	300	8.1
6.89*7.48	100256	5	50*32*21	250	9.1
6.89*7.48	100258	7	50*32*21	200	9.5
6.89*7.48	100261	10	50*32*21	150	9.1
6.89*9.06	100263	15	50*32*21	120	11.5
6.89*9.06	100264	20	50*32*21	90	9.8
6.89*9.06	100265	30	50*32*21	80	13.0
9.25*10.63	100267	50	50*32*21	50	13.0


REVISION INFORMATION			
Rec.	Rec. Date	Modified By	Brief Description

## Master Caton

## Label



4 inch / 101.6mm

PART NO. <b>100250BL</b>	COLOR 	
DESCRIPTION <b>0.5Ft Cat6A UTP Slim Ethernet Network Booted Cable 28AWG Blue</b>		
PO NO.	C/NO. of	
QUANTITY 550 <b>550</b> PIECES	N.W.: KGS G.W.: KGS	
VENDER CODE	DATA CODE	MADE IN <b>China</b>

6 inch / 152.4mm

4 sides need label



Front



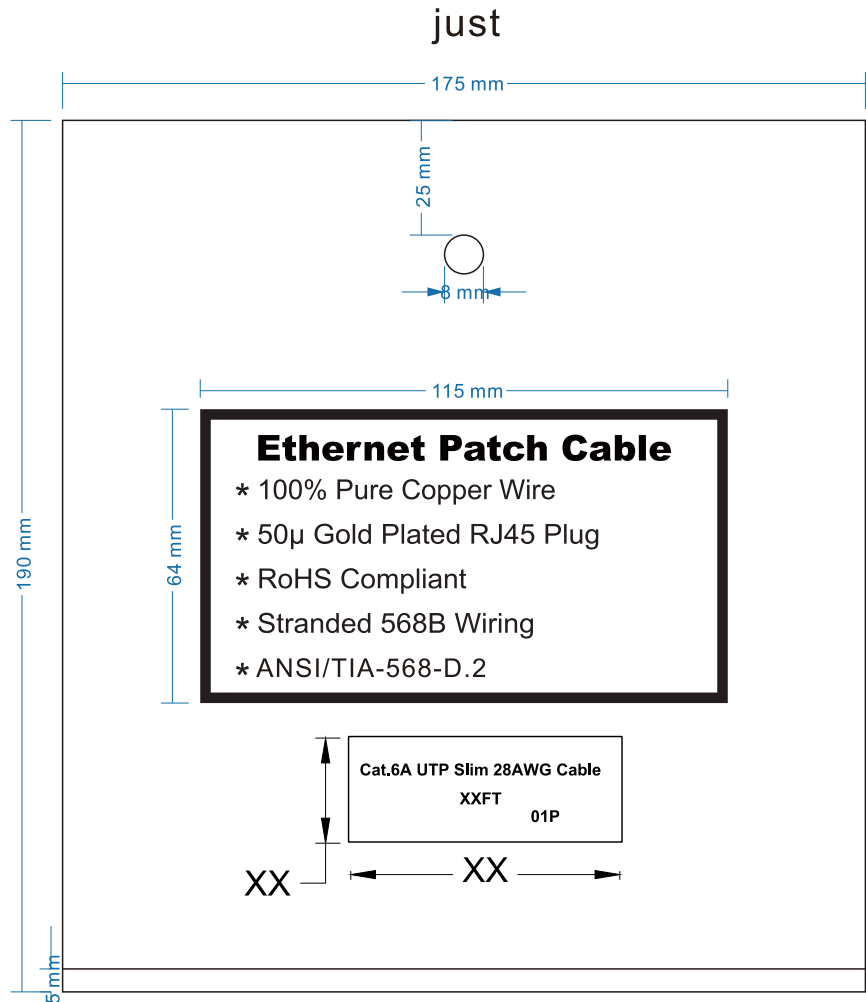
Back



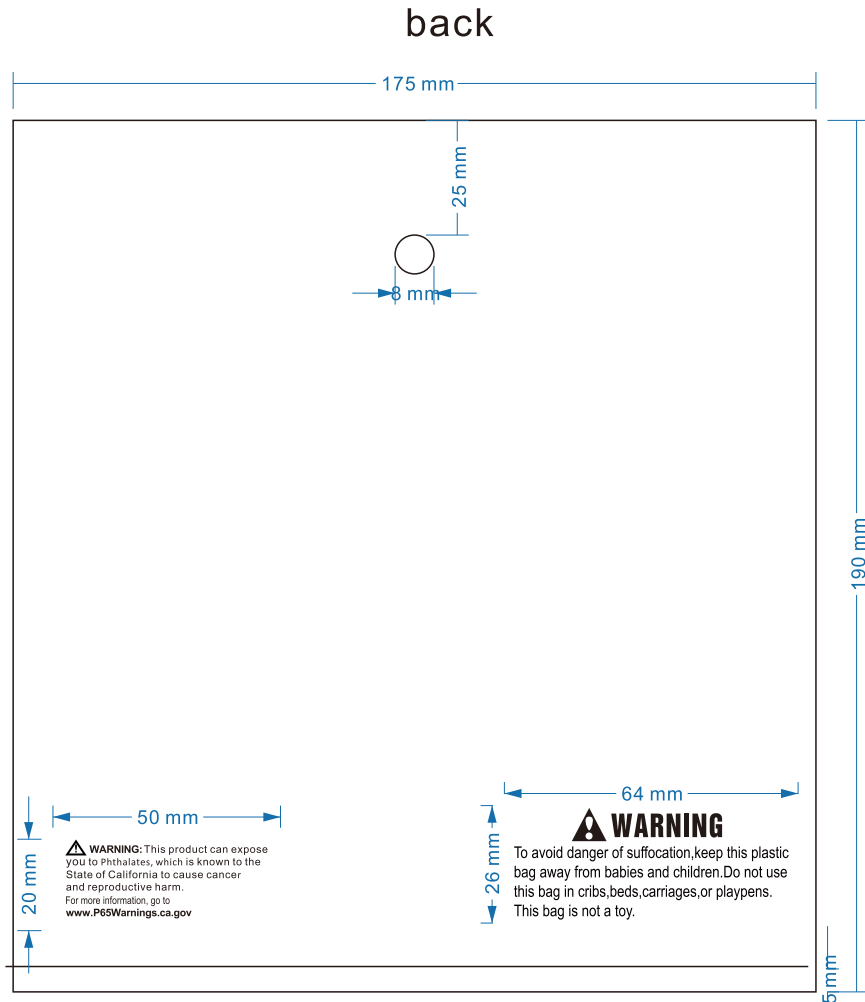
DRAWN BY LY	DATE: 2022/08/11	DESCRIPTION: UTP Cat 6A PATCH CORD
CHECKED BY MTC	SHEET 1 of 1	ITEM NO. 81025092
APPROVED BY	SCALE 1:1	REC. 00 UNIT: mm 

NOTE: ALL MATERIAL COMPLIANT ROHS STANDARD

REVISION INFORMATION			
Rec.	Rec. Date	Modified By	Brief Description



Material: PE Thickness: 0.08mm



Warning Label: Arial 10PT

Pro 65 label: Arial 7PT



DRAWN BY LY	DATE: 2022/08/11	DESCRIPTION: UTP Cat 6A PATCH CORD
CHECKED BY MTC	SHEET 1 of 1	ITEM NO. 81025092
APPROVED BY	SCALE 1:1	REC. 00 UNIT: mm

