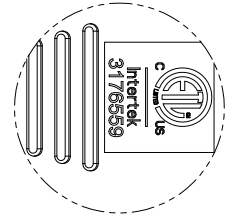
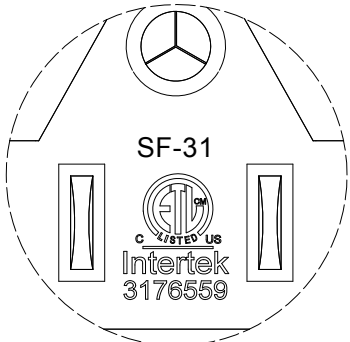
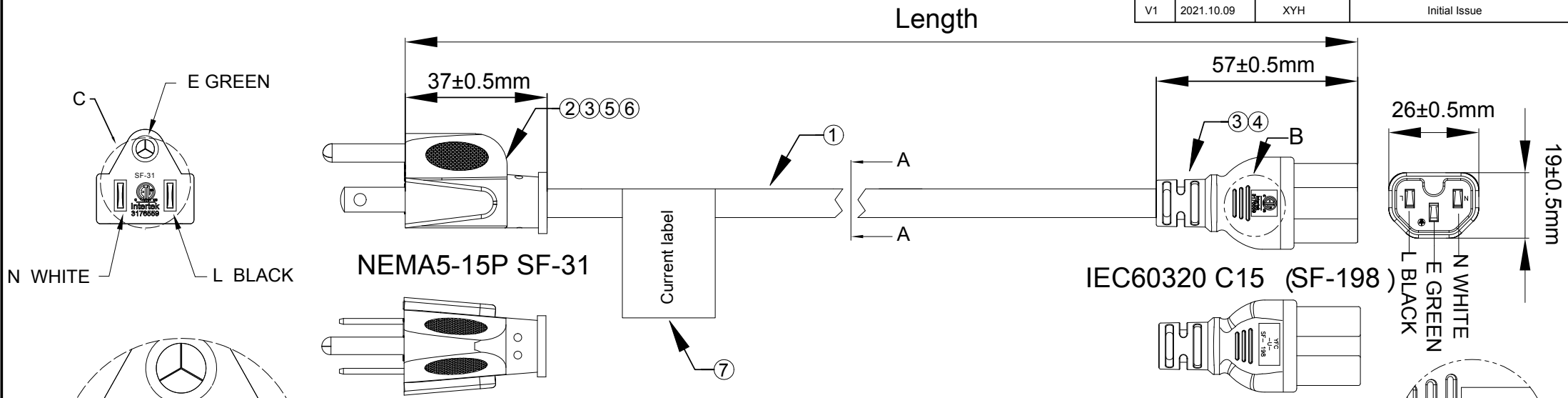


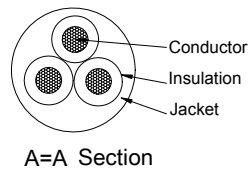
VERSION INFORMATION (Vender)			
Rev.	Rev. Date	Modified By	Brief Description
V1	2021.10.09	XYH	Initial Issue



**WIRE MARKING(N0.702):**  
 (ETL)US 3176559 SJT 3 X 14AWG 105°C 300V VW-1  
 C(ETL) SJT 3X2.08 mm<sup>2</sup> (14AWG) FT2

PID	Cable Color	Molding Color	SF-198 (C15) Bracket color	Length (FT )
	Black	Black	Black	4±0.1
	Black	Black	Black	8±0.15
	Black	Black	Black	2±0.08
	White	White	White	3±0.08
	White	White	White	6±0.15
	White	White	White	8±0.15

NEMA5-15P SF-31	Wire	IEC60320 C15 (SF-198)
E	GREEN	E
N	WHITE	N
L	BLACK	L



Polarity and Continuity Test	
Dielectric Voltage Withstand Test :1500V /1 Sec	
Electrical Performance (20°C)	
Item	Parameter
Conductor resistance	≤ 9.06Ω/1000m
Voltage Rating	AC 300V

NO.	PART NAME	SPECIFICATION DESCRIPTION	QTY	UNIT
⑦	Current label	C (ETL) US General Use Cordset Indoor label 15A 125V	1	PC
⑥	Molding	PVC 40P	AR	G
⑤	Housing	Bracket 5-15P Three Plug PBT UL94-V0	1	PC
④	Terminal	C15Terminal Brass Natural color and Bracket, With 18-14AWG	1	PC
③	Terminal	5-15P Non-Polar, Current Carrying End, With Riveting 18-16AWG Nickel Plating	2	PCS
②	Terminal	5-15P Terminal Nickel Plated 18-16AWG	1	PC
①	Cable	SJT 14AWGx3C 105°C	1	PC

APPROVED BY PM & DATE :		DESCRIPTION : Power Cord - NEMA 5-15P to IEC 60320 C15, 14AWG, 15A/1875W, SJT, 125V,			
PM PRINT NAME :		DATE :	UNIT :	SHEET :	FILE NAME :
		2021.10.09	MM	1 OF 4	PID_PRODUCT