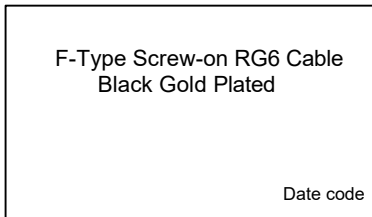
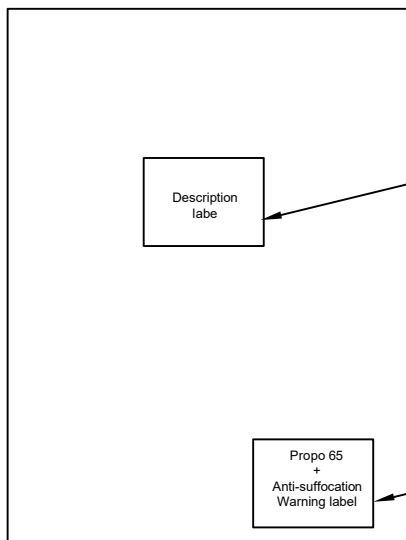


**NOTE: ALL MATERIAL COMPLIANT ROHS STANDARD**

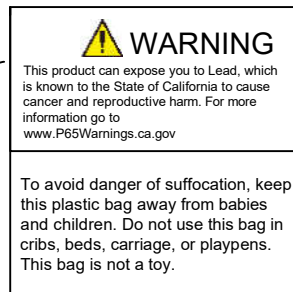
| REVISION INFORMATION |            |             |   |
|----------------------|------------|-------------|---|
| Rev.                 | Rev. Date  | Modified By | Brief Description                           |
| 1.0                  | 2022.04.07 | Cheng Pu    | F-Type Screw-on RG6 Cable Black Gold Plated |

PE BAG

Product Decs Label  
4\*7 CM

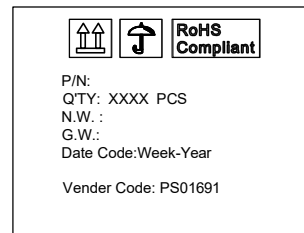


Warning Label  
6\*6 CM

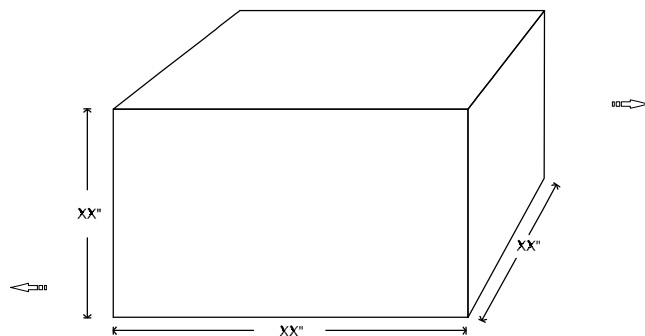
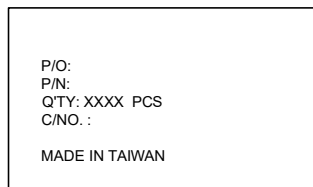


| Item # | Length(L)              | PE bg. size/cm | QTY/CTN | arton size/c | G.W. (KG) |
|--------|------------------------|----------------|---------|--------------|-----------|
| 202712 | 3FT / 915 ± 30 mm      | TBD            | 250     | TBD          | TBD       |
| 202713 | 6FT / 1830 ± 30 mm     | TBD            | TBD     | TBD          | TBD       |
| 202714 | 12FT / 3660 ± 80 mm    | TBD            | TBD     | TBD          | TBD       |
| 202715 | 25FT / 7620 ± 80 mm    | TBD            | TBD     | TBD          | TBD       |
| 202716 | 50FT / 15240 ± 100 mm  | TBD            | TBD     | TBD          | TBD       |
| 202717 | 75FT / 22860 ± 150 mm  | TBD            | TBD     | TBD          | TBD       |
| 202718 | 100FT / 30480 ± 150 mm | TBD            | TBD     | TBD          | TBD       |

Side Shipping Mark



Front & Back Side Shipping Mark



|                         |                     |   |
|-------------------------|---------------------|---|
| DRAWN BY<br>Mr. Kuo     | DATE:<br>2022.02.23 | DESCRIPTION:<br>F-Type Screw-on RG6 Cable Black Gold Plated |
| CHECK BY<br>Mr. Liu     | SHEET 1 of 1        | ITEM NO. 202712/3/4/5/6/7/8                                 |
| APPROVED BY<br>John Lee | SCALE 2:1           | REV. 00 UNIT: mm  |