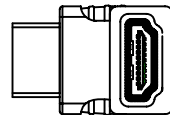
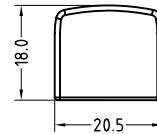
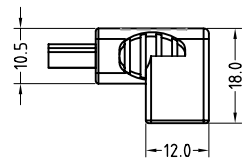
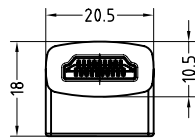
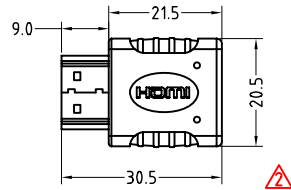


NOTE:ALL MATERIAL COMPLIANT ROHS STANDARD

REVISION INFORMATION			
Rev.	Rev. Date	Modified By	Brief Description
1.0	2016/04/28	Pillar	Add labels on packaging
2.0	2016/09/09	Pillar	Change Molding
3.0	2017/08/21	Ndq	Add one bag to the packing

Electrical character:

- 1)100% Open/short/Intermittent testing
- 2)Withstanding voltage:DC/AC 300V AT 10ms.
- 3)Insulation resistance:10M Ohm(min)
- 4)Conductive resistance:2 Ohm



PIN ASSIGNMENT

HDMI A F	HDMI A M
3	3
1	1
2	2
6	6
4	4
5	5
9	9
7	7
8	8
12	12
10	10
11	11
19	19
14	14
17	17
13	13
15	15
16	16
18	18
SHELL	SHELL

①	PCBA	HDMI A Male to Female PCBA		
②	Conn	HDMI A Male,Pin G/F,Black Insulation,Shell/Steel(Gold Plated)		
③	Conn	HDMI A Female,Pin G/F,Black Insulation,Shell/Steel(Gold Plated)		
④	Innrmold	PE,Low density		
⑤	Overmold	PVC,45Pa,Black		
NO.	PART NAME	SPECIFICATION DESCRIPTION	QTY	UNIT

Unless specified on the drawing, tolerances are per the follows:

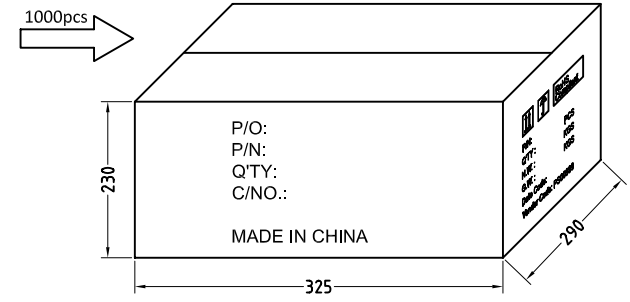
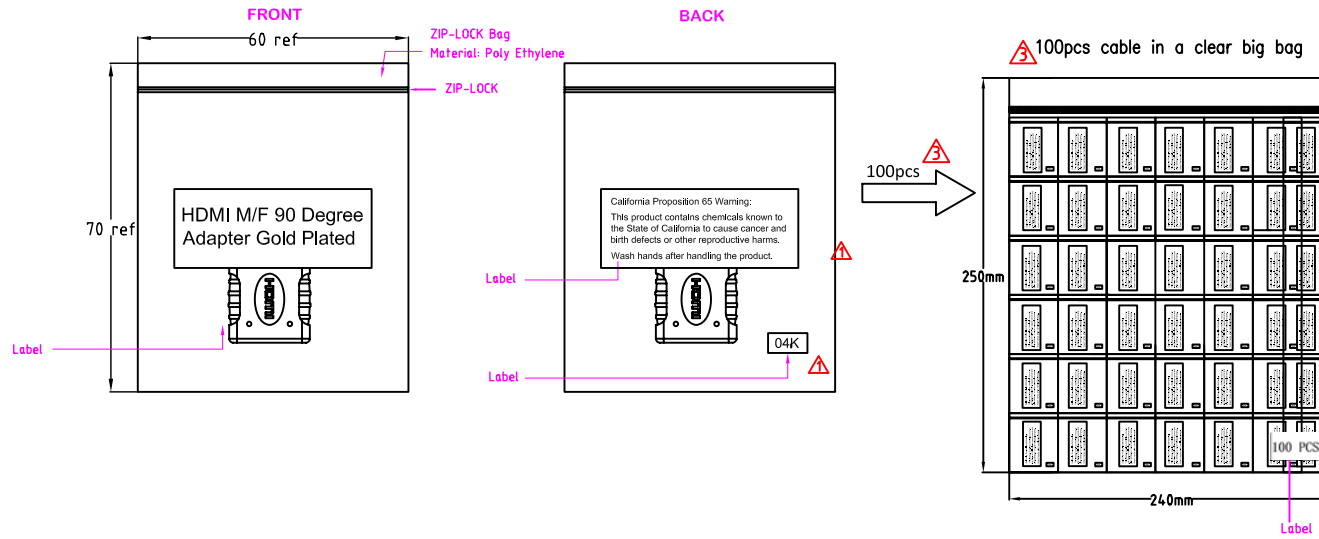
.	+1
.x	+0.2
.xx	+0.05

DRAWN BY	DATE: 2017/08/21	DESCRIPTION: HDMI Male-Female 90 degree Adapter
CHECKED BY	SHEET 1 of 2	ITEM NO. 181245
APPROVED BY	SCALE None	REV. 3.0
	UNIT:mm	

NOTE: CARTON MATERIAL MUST BE A=A

REVISION INFORMATION

Rev.	Rev. Date	Modified By	Brief Description
1.0	2016/04/28	Pillar	Add labels on packaging
2.0	2016/09/09	Pillar	Change Molding
3.0	2017/08/21	Ndq	Add one bag to the packing



MAIN MARK

P/O: XXXXXX
 P/N: 181245
 Q'TY: 1000
 C/NO.: Cxxx
 MADE IN CHINA

SIDE MARK

RoHS Compliant
 P/N: 181245
 Q'TY: 1000 PCS
 N.W.: 10.40 KGS
 G.W.: 11.92 KGS
 Date Code: xx-xxxx
 Vender Code: PS00999

Label Size: 50*20mm

HDMI M/F 90 Degree Adapter Gold Plated

California Proposition 65 Warning:
 This product contains chemicals known to the State of California to cause cancer and birth defects or other reproductive harms.
 Wash hands after handling the product.

Label: Size: 10 x 5 mm

04K

Label: Size: 35 x 20 mm

100 PCS

Carton Size: 12.80"(L)*11.42"(W)*9.06"(H)
 Carton Quantity: 1000 pcs
 Carton Weight: 12.13 LBS

Packing Instruction:

1. Each product in a POLY-BAG, The label is attached to the PE bag. 100pcs cable in a clear big bag, The label is attached to the PE bag,
2. Use a waterproof bag to pack the products before going into master carton. Make sure each individual cable is staggered and positioned tidily. A paperboard is needed in both the bottom and the top of the products.
3. See shipping mark on the left.

DRAWN BY	DATE: 2017/08/21	DESCRIPTION: HDMI Male-Female 90 degree Adapter	
CHECKED BY	SHEET 2 of 2	ITEM NO. 181245	
APPROVED BY	SCALE None	REV. 3.0	UNIT: mm