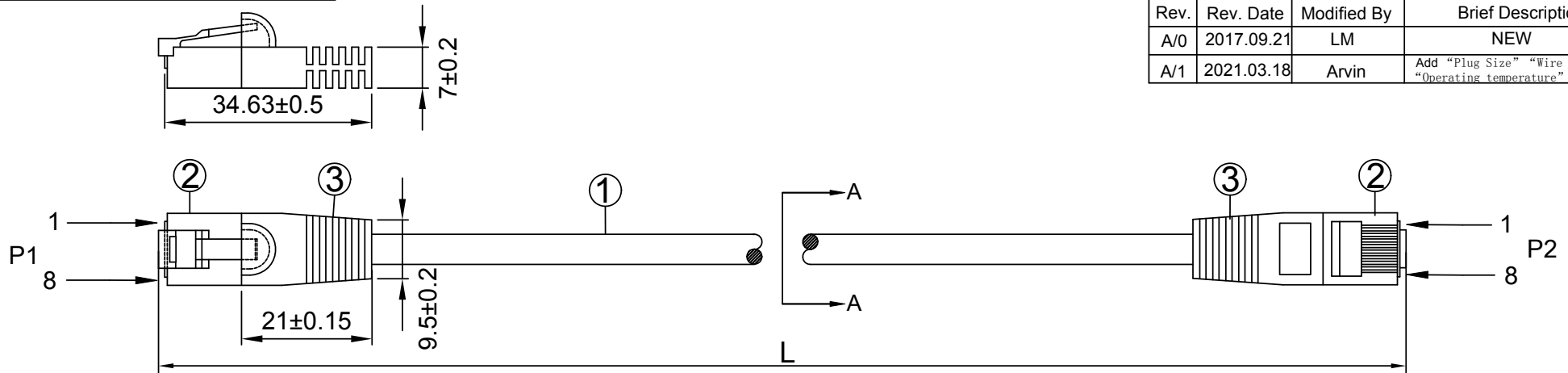


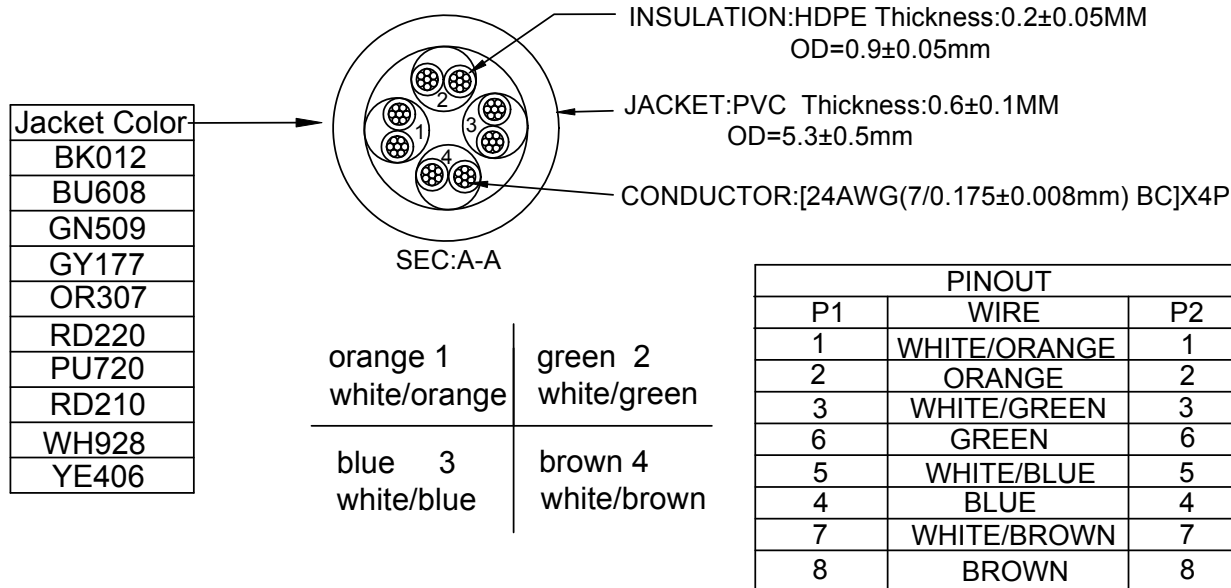
NOTE: ALL MATERIAL COMPLIANT ROHS STANDARD

REVISION INFORMATION			
Rev.	Rev. Date	Modified By	Brief Description
A/0	2017.09.21	LM	NEW
A/1	2021.03.18	Arvin	Add "Plug Size" "Wire printing" "Operating temperature"



INK MARKING<FP2047> : YFC CAT.6 UTP ISO/IEC 11801 & EN 50288 & ANSI/TIA-568.2-D ETL/3P VERIFIED ▲ 24AWGX4P  
 PATCH TYPE CMX(UL) E164469-XX

Operation Temperature:-20°C~+60°C  
 conductor resistance:120↓(Ω/Km)at20°C



L(ft)	T(inch)	T(%)	L(ft)	T(inch)	T(%)
0.5	±0.6	10%	15	±3.15	1.75%
1	±1.2	10%	20	±4	1.67%
1.5	±1.2	6.67%	25	±4	1.33%
2	±1.2	5%	30	±6	1.67%
3	±1.2	3.33%	35	±6	1.43%
4	±1.2	2.5%	40	±6	1.25%
5	±1.2	2%	50	±6	1.0%
6	±1.2	1.67%	75	±6	0.67%
7	±2	2.38%	100	±6	0.5%
8	±2	2.08%	125	±6	0.4%
9	±2	1.85%	150	±6	0.33%
10	±2	1.67%	175	±6	0.29%
12	±2	1.39%	200	±6	0.25%

**BESTLINK NETWORKARE**

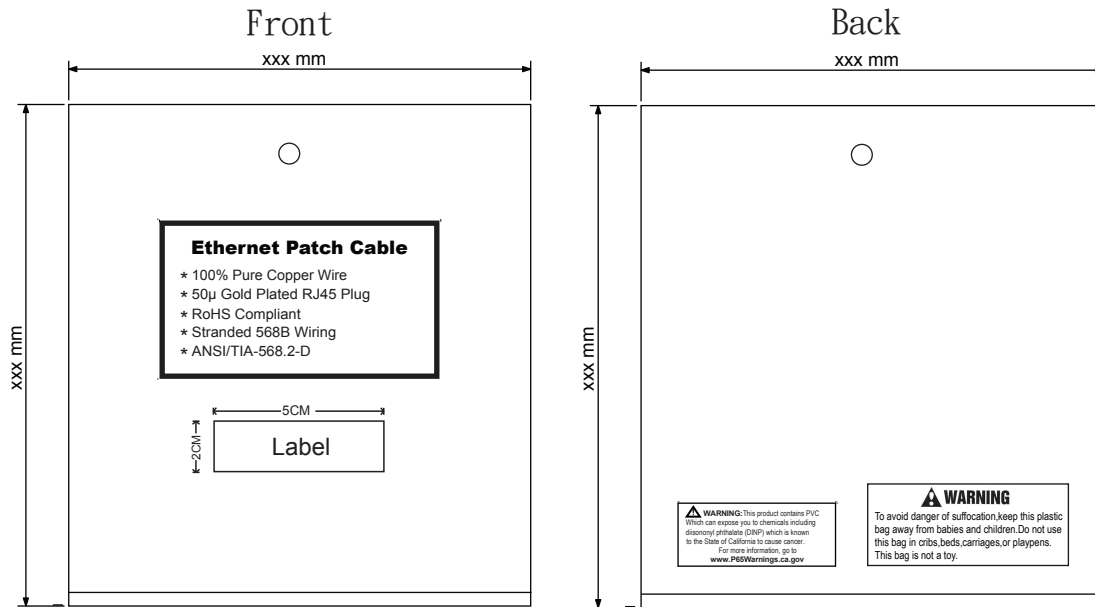
DRAWN BY Arvin	DATE: 2021/03/18	DESCRIPTION: LAN PATCH C6 UTP 24AWG 4P
CHECKED BY YB	SHEET 1 of 1	ITEM NO. 10071XX 10072XX 10073XX 10074XX 10079XX
APPROVED BY CQ	SCALE 1:1	REV. 01 UNIT:mm

NO.	PART NAME	SPECIFICATION DESCRIPTION	QT'Y	UNIT
③	MOLD	PVC YU-19	A/R	Kg
②	PLUG	8P8C 50U RJ45	2	PCS
①	CABLE	CAT.6 UTP PVC 24AWG*4P BC	A/R	M

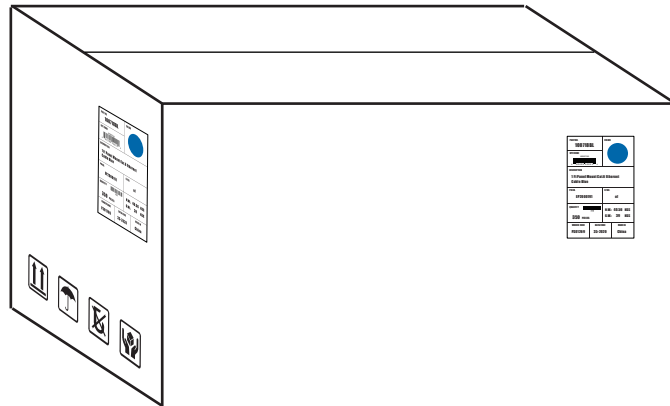
NOTE: CARTON MATERIAL MUST BE A=A

REVISION INFORMATION

Rev.	Rev. Date	Modified By	Brief Description



E BAG SIZE(INCH)	PART NO.	length/FT	CARION SIZE(INCH)	Q'TY	G.W(LBS)
6.89x7.48	100716	0.5	15.75x15.75x7.87	500	20.24
6.89x7.48	100701	1	15.75x15.75x6.69	400	20.9
6.89x7.48	100702	2	15.75x15.75x9.06	300	23.32
6.89x7.48	100717	2	15.75x15.75x9.06	300	19.8
6.89x7.48	100703	3	15.75x15.75x6.69	150	15.4
6.89x7.48	100723	3	15.75x15.75x6.69	150	15.4
6.89x7.48	100700	4	15.75x15.75x9.06	200	25.3
6.89x7.48	100704	5	15.75x15.75x7.87	120	18.48
6.89x7.48	100724	5	15.75x15.75x7.87	120	18.48
6.89x7.48	100713	6	15.75x15.75x9.06	150	26.4
6.89x7.48	100705	7	15.75x15.75x7.87	120	23.98
6.89x7.48	100725	7	15.75x15.75x7.87	120	23.98
6.89x7.48	100748	8	15.75x15.75x9.06	110	24.86
6.89x7.48	100749	9	15.75x15.75x9.06	90	22.66
6.89x7.48	100706	10	15.75x15.75x7.87	100	27.06
6.89x7.48	100747	12	15.75x15.75x7.87	80	25.74
6.89x9.06	100707	15	15.75x15.75x9.06	70	27.72
6.89x9.06	100714	20	15.75x15.75x9.06	60	30.8
6.89x9.06	100708	25	15.75x15.75x9.06	50	31.68
6.89x9.06	100719	30	15.75x15.75x7.87	45	33.66
9.25x10.63	100718	35	15.75x15.75x9.06	40	35.2
9.25x10.63	100720	40	15.75x15.75x7.87	25	25.3
9.25x10.63	100709	50	15.75x15.75x9.06	25	31.24
9.25x11.81	100710	75	15.75x15.75x9.06	20	36.74
9.25x11.81	100711	100	16.54x16.54x10.24	20	48.62
11.81x14.96	100712	150	18.11x9.84x11.02	10	36.3
11.81x14.96	100715	200	18.11x9.84x11.02	8	38.28



DRAWN BY :FP	DATE: 2021.03.24	DESCRIPTION: C6 UTP 24AWG PVC Molding
CHECKED BY :ZL	SHEET 1 of 2	ITEM NO.
APPROVED BY	SCALE 1 : 1	REV. 00
	UNIT:mm	