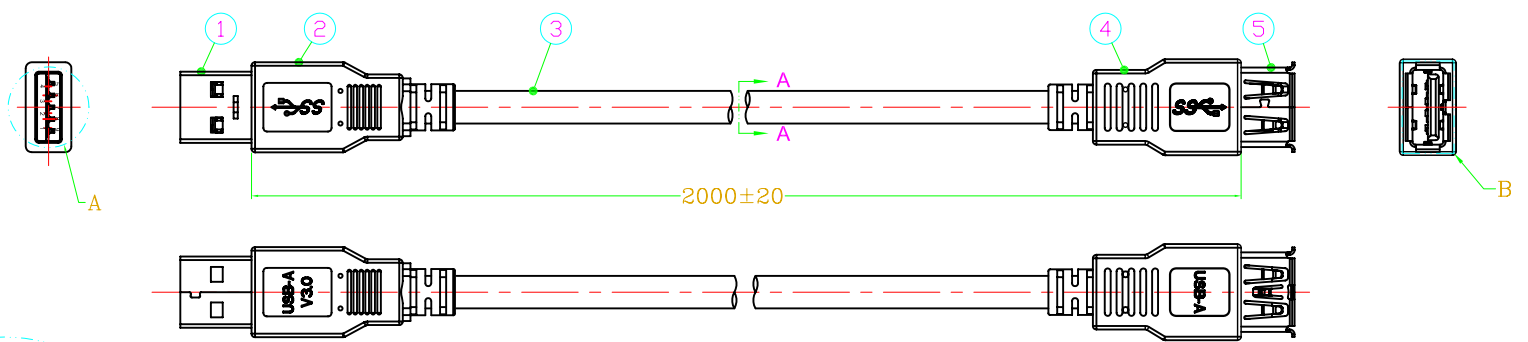
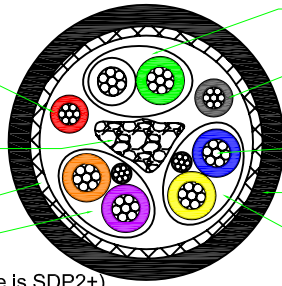
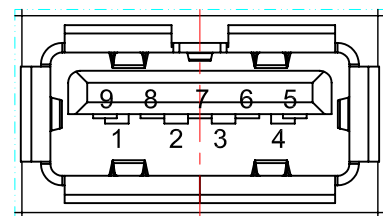
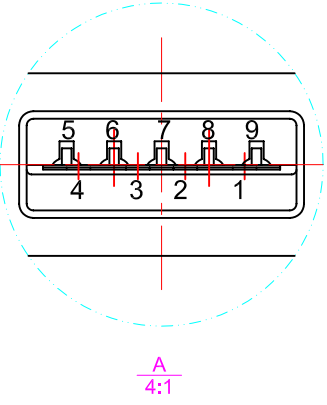


DATE	REV.	REVISION	DRAFTING	CHECKED
2011.11.16	A/0	NEW	KONG MX	CHEN GW



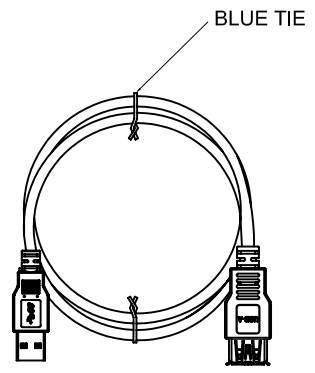
WHITE INK MARKING:YFC USB 3.0 CABLE 28AWG AWM E139315-F5 STYLE 2725 80°C 30V VW-1



- UTP (White wire is D-, Green wire is D+)
- Power wire (Red wire is VBUS, Black wire is Gnd)
- Conductor: Tinner Copper
- Jacket: PVC BLUE
- SDP1 (STP Twisted Pair1, Blue wire is SDP1-, Yellow wire is SDP1+)
- SDP2 (STP Twisted Pair2, Purple wire is SDP2-, Orange wire is SDP2+)
- Filler optional
- Tinned copper braiding

B
4:1

SECTION A-A



Length(FT)	Tolerances(FT)	P/N
3	±0.045	150169
6	±0.09	150170
10	±0.15	150171

Unless specified on the drawing, tolerances are per the follows :
 X. ± 0.20
 .X ± 0.10
 .XX ± 0.05

Standard A M		Wire		Standard A F	
Pin	Signal Name	Wire	Signal Name	Pin	Signal Name
1	VBUS	1	PWR	1	VBUS
2	D-	2	UTP D-	2	D-
3	D+	3	UTP D+	3	D+
4	GND	4	GND PWRrt	4	GND
5	SSRX-	5	SDP1-	5	SSRX-
6	SSRX+	6	SDP1+	6	SSRX+
7	GND_Drain	7, 10	SDP1 Drain SDP2 Drain	7	GND_Drain
8	SSTX-	8	SDP2-	8	SSTX-
9	SSTX+	9	SDP2+	9	SSTX+
--	--	--	--	--	--
Shell	Shield	Braid	Shield	Shell	Shield

1	Terminal:Phos/Brass,G/F	USB3.0 A Female Plug	5
1	PVC: BU054	Molding_ A Female	4
1	USB 3.0 CABLE 3P*28AWG+2C*28AWG	USB3.0 Cable 28AWG	3
1	PVC: BU054	Molding_ A Male	2
1	Terminal:Phos/Brass,G/F	USB3.0 A Male Plug	1
Q'ty	SPECIFICATION	ITEM	NO



DRAW. NO		DESC.		USB3.0 A TYPE MALE TO USB3.0 A TYPE FEMALE		
DEPARTMENT	RD	DRAW	KONG MX	DATE	2011.11.16	
SCALE	N/A	APPROVED	CHEN GW	DATE	2011.11.16	
UNIT	mm	SHEET	1 OF 1			

Material	Part Number	150169/150170/ 160171	Note	3RD
1	2	3	4	5