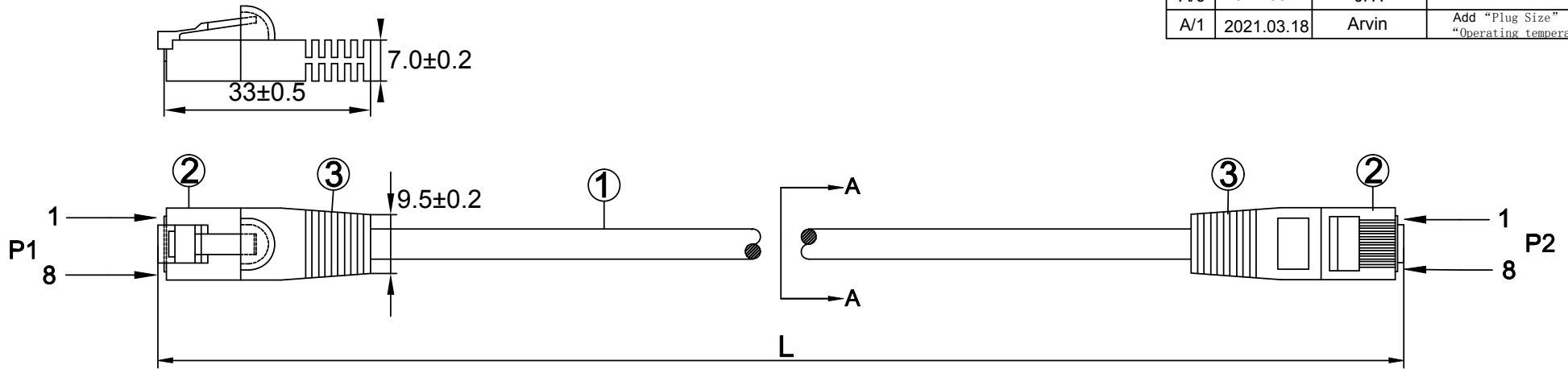
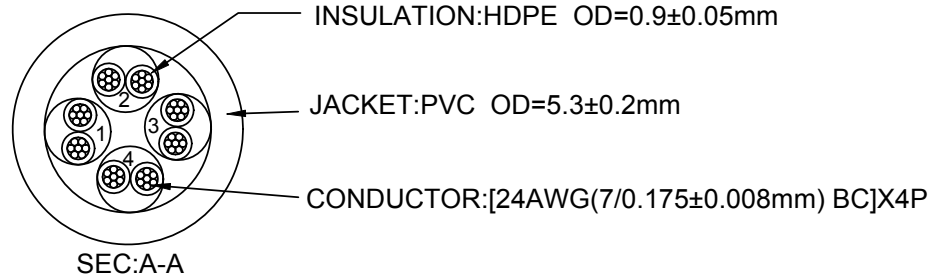
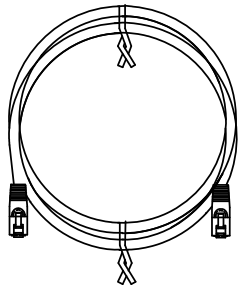


NOTE: ALL MATERIAL COMPLIANT ROHS STANDARD

REVISION INFORMATION			
Rev.	Rev. Date	Modified By	Brief Description
A/0	2017.09.21	JHY	NEW
A/1	2021.03.18	Arvin	Add "Plug Size" "Wire printing" "Operating temperature"



INK MARKING<FP2047> : YFC CAT.6 UTP ISO/IEC 11801 & EN 50288 & ANSI/TIA-568.2-D ETL/3P
 VERIFIED ▲ 24AWGX4P PATCH TYPE CMX(UL) E164469-XX



Operation Temperature:-20°C~+60°C
 Conductor resistance:120Ω/(Ω/Km) at 20°C

L(ft)	T(inch)	T(%)	L(ft)	T(inch)	T(%)
0.5	±0.6	10%	10	±2	1.67%
1	±1.2	10%	15	±3.15	1.75%
1.5	±1.2	6.67%	20	±4	1.67%
2	±1.2	5%	25	±4	1.33%
3	±1.2	3.33%	50	±6	1.0%
4	±1.2	2.5%	75	±6	0.67%
5	±1.2	2%	100	±6	0.5%
6	±1.2	1.67%	150	±6	0.33%
7	±2	2.38%	200	±6	0.25%

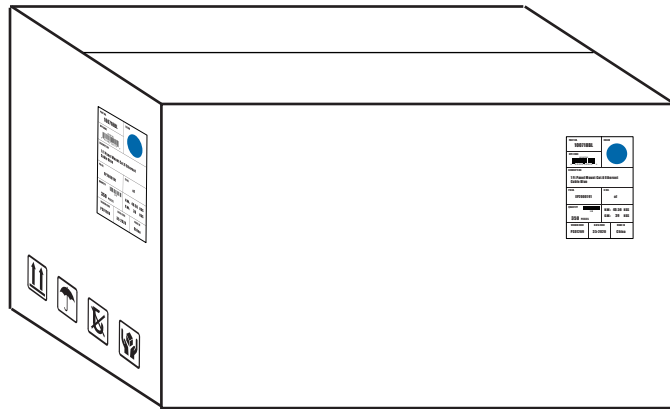
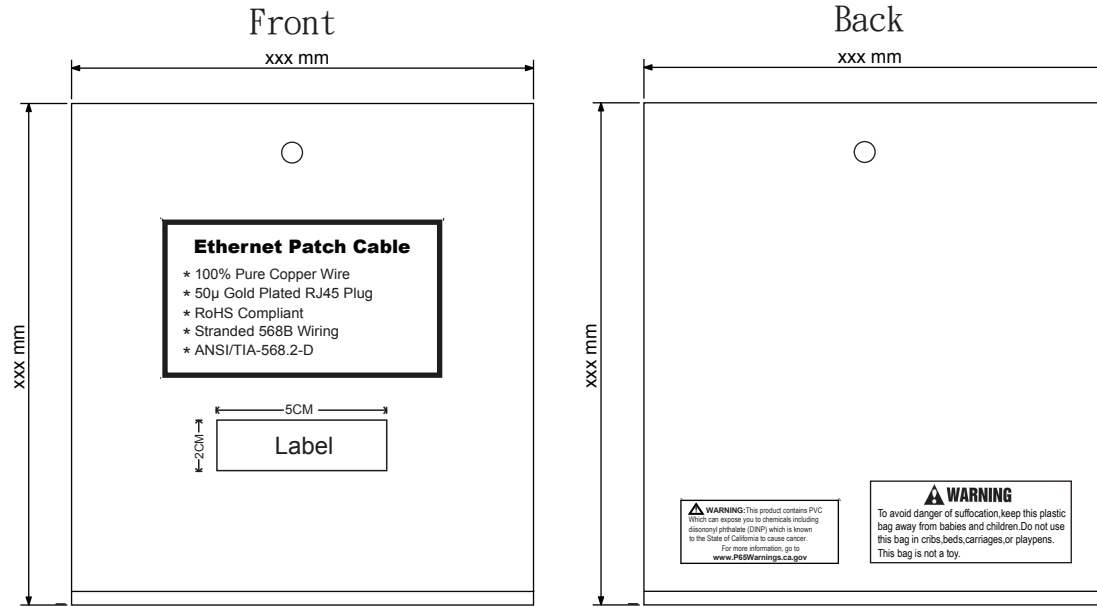
PINOUT		
P1	WIRE	P2
1	WHITE/ORANGE	3
2	ORANGE	6
3	WHITE/GREEN	1
6	GREEN	2
5	WHITE/BLUE	5
4	BLUE	4
7	WHITE/BROWN	7
8	BROWN	8

orange 1	green 2
white/orange	white/green
blue 3	brown 4
white/blue	white/brown

NO.	PART NAME	SPECIFICATION DESCRIPTION	QTY	UNIT
③	MOLD	PVC YU-19 GN509	A/R	Kg
②	CONN	8P8C 50U RJ45	2	PCS
①	CABLE	CAT.6 UTP PVC 24AWG*4P GY117 BC	A/R	M

DRAWN BY Arvin	DATE: 2021/03/18	DESCRIPTION: LAN PATCH CAT6 UTP 24AWG 4P Crossover
CHECKED BY YB	SHEET 1 of 1	ITEM NO. 1007XXX
APPROVED BY CQ	SCALE 1:1	REV. 01 UNIT:mm

NOTE: CARTON MATERIAL MUST BE A=A



REVISION INFORMATION			
Rev.	Rev. Date	Modified By	Brief Description

E BAG SIZE(INCH)	PART NO.	length/FT	CARION SIZE(INCH)	Q'TY	G.W(LBS)
6.89x7.48	100716	0.5	15.75x15.75x7.87	500	20.24
6.89x7.48	100701	1	15.75x15.75x6.69	400	20.9
6.89x7.48	100702	2	15.75x15.75x9.06	300	23.32
6.89x7.48	100717	2	15.75x15.75x9.06	300	19.8
6.89x7.48	100703	3	15.75x15.75x6.69	150	15.4
6.89x7.48	100723	3	15.75x15.75x6.69	150	15.4
6.89x7.48	100700	4	15.75x15.75x9.06	200	25.3
6.89x7.48	100704	5	15.75x15.75x7.87	120	18.48
6.89x7.48	100724	5	15.75x15.75x7.87	120	18.48
6.89x7.48	100713	6	15.75x15.75x9.06	150	26.4
6.89x7.48	100705	7	15.75x15.75x7.87	120	23.98
6.89x7.48	100725	7	15.75x15.75x7.87	120	23.98
6.89x7.48	100748	8	15.75x15.75x9.06	110	24.86
6.89x7.48	100749	9	15.75x15.75x9.06	90	22.66
6.89x7.48	100706	10	15.75x15.75x7.87	100	27.06
6.89x7.48	100747	12	15.75x15.75x7.87	80	25.74
6.89x9.06	100707	15	15.75x15.75x9.06	70	27.72
6.89x9.06	100714	20	15.75x15.75x9.06	60	30.8
6.89x9.06	100708	25	15.75x15.75x9.06	50	31.68
6.89x9.06	100719	30	15.75x15.75x7.87	45	33.66
9.25x10.63	100718	35	15.75x15.75x9.06	40	35.2
9.25x10.63	100720	40	15.75x15.75x7.87	25	25.3
9.25x10.63	100709	50	15.75x15.75x9.06	25	31.24
9.25x11.81	100710	75	15.75x15.75x9.06	20	36.74
9.25x11.81	100711	100	16.54x16.54x10.24	20	48.62
11.81x14.96	100712	150	18.11x9.84x11.02	10	36.3
11.81x14.96	100715	200	18.11x9.84x11.02	8	38.28



DRAWN BY :FP	DATE: 2021.03.24	DESCRIPTION: C6 UTP 24AWG PVC Molding	
CHECKED BY :ZL	SHEET 1 of 2	ITEM NO.	
APPROVED BY	SCALE 1 : 1	REV. 00	UNIT:mm