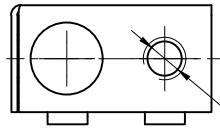
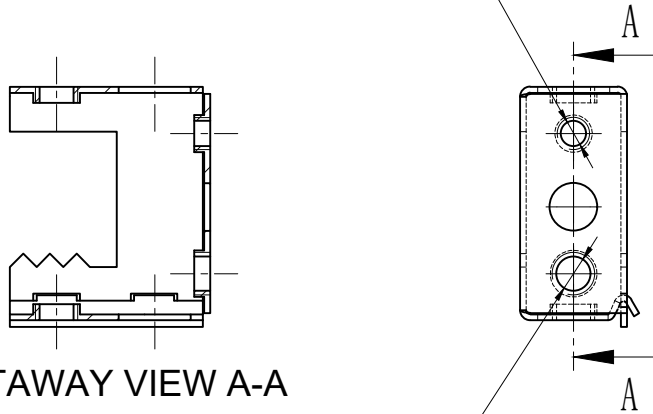


REVISIONS			
SYM.	BY.	REVISIONS	DATE
A			



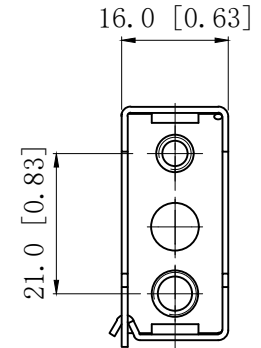
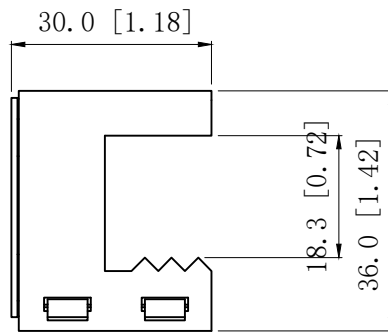
#1/4-20 UNC HOLE

#10-24 UNC HOLE

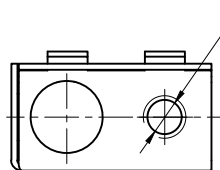
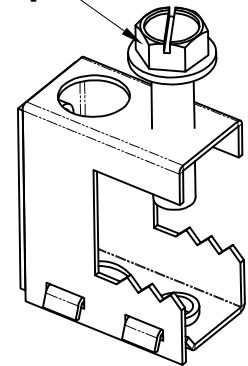


CUTAWAY VIEW A-A

#1/4-20 UNC HOLE



#1/4-20 UNC  
[SEE NOTE 4]



#1/4-20 UNC HOLE

PACKAGE:

50PCS/CTN, Carton Packing Only without PE self-sealing bag

NOTES:

- 1.All dimensions in millimeters and [inches];
- 2.Material:C1065 spring steel .thickness:0.9mm[0.035],  
Finish:E-coat
- 3.Free of sharp edge and burrs.max burr 0.127[0.005];
- 4.#1/4-20×1 slotted flange hex head cup point machine  
screw, case harden;  
Finish: Black Oxide .



SIZE	DWG NO.	REV
A4	104248	